



Horeston Grange

Higham-on-the-Hill

Weddington

St Nicolas Park

Hinckley Road

The Long Shoot

Nuneaton

Bulkington

Maple Park

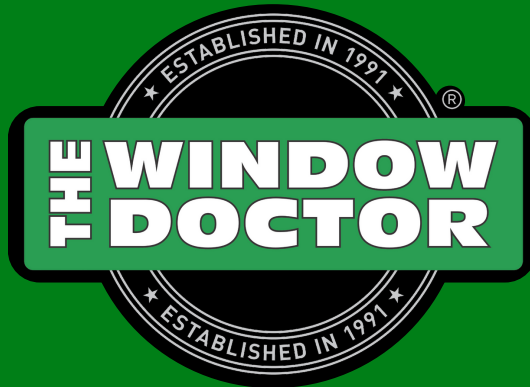
Attleborough

**The Local Rock**

*Bringing you the best from the heart of the community for 10 years*

Web: [www.localrock.co.uk](http://www.localrock.co.uk) Email: [info@localrock.co.uk](mailto:info@localrock.co.uk)

**8,500** copies delivered



**THE #1 WINDOW REPAIR, DOOR REPAIR  
& GLASS UNIT SPECIALISTS**

**BOOK YOUR FREE SURVEY ONLINE**

**[www.thewindowdoctorltd.com](http://www.thewindowdoctorltd.com)**



Excellent



★ Trustpilot



ROOFRITE<sup>ltd</sup>

Company Number 11814859

- ✓ **No Deposit Required**
- ✓ **No Call Out Fees**
- ✓ **All Rubbish Removed**
- ✓ **Fully Insured**

**FREE SCAFFOLDING**  
WITH ALL NEW ROOFS



# ROOFING SERVICES EXPERTS

ALL ASPECTS OF ROOFING WORK  
UNDERTAKEN  
FLAT ROOFING  
PITCH ROOFING  
RE-POINTING  
RE-BEDDING  
CHIMNEY RE-BUILD  
DRY VERGE  
DRY RIDGE  
UPVC FASCIAS, SOFFITS & GUTTERING  
ROOFLINE  
MOSS REMOVAL

**25 YEAR GUARANTEE**



**CALL TODAY FOR A FREE QUOTATION & ADVICE**

**LEICESTER**

**0116 442 0189**

**HINCKLEY**

**01455 372033**

**INFO@ROOFRITEUK.COM • WWW.ROOFRITEUK.COM**

**Find all  
the latest  
editions,  
prices and  
media pack on  
our website**



**www.localrock.co.uk**

**VILLAGES - HINCKLEY CENTRAL  
NUNEATON  
SOUTH LEICESTER**



**For further details call**

**01455 698 161 - 07977661102**

**Email [info@localrock.co.uk](mailto:info@localrock.co.uk)**

## CONTENTS:

- 5 New Homes for Bulkington
- 7 Another Donation from the Heart from League of Friends
- 9 WIN £100 Hamper/Gift Voucher to Spend at Hamlett's Harvest
- 13 Transforming Nuneaton Enters Second Phase
- 15 Car Parking Fees to Change
- 17 Check Your Smoke Alarm!

**www.localrock.co.uk**

*Read Us -  
Keep Us -  
Recycle Us*



## We would like to say a big thank you

The Directors of Holiday Lounge would like to thank each and every one of our clients for booking with us during January, to make it the best trading month since we opened in 2004.

We would like to thank our amazing team for all of their continued hard work, The Local Rock for publishing our editorial and looking after us for our advertising, we have used them for many years and found our advertising campaigns very successful.

We would highly recommend The Local Rock magazine team to look after your advertising in the local community, it has generated so many new clients for us. The quality of the service, the prices and the quality of the various magazines, we look forward to our next advertising campaign with them.

**Promote your business regularly with us, call us on 01455 698161**



**The  
Local  
Rock**

### Terms and Conditions

Although all effort will be made to meet customers' wishes, the publishers do not accept responsibility for inaccuracies in advertisements or in consequences arising, nor do they guarantee the insertion of any advertisement on a specified section of the magazine. No responsibility is accepted for the loss or damage to copy, or error in the printing. It is the responsibility of customers placing adverts to ensure conformity with the Trade Description Act 1975 Sex Discrimination Act 1975, Business Advertisements Disclosure Order 1977 and the Consumer Credit Act 1974. All artwork used in The Local Rock must not be published or used in any other publications without our permission. All advertisements placed in the Local Rock need to be pre-paid prior to insertion. We reserve the right to amend or omit any advertisement without giving prior notice to the advertiser. All advertisements are accepted in good faith. Placing an order with The Local Rock will signify acceptance of the above conditions. **The Local Rock January 2025**

**DISCLAIMER.** The opinions expressed in this publication are not necessarily those of the editor. The Local Rock retains typographical copyright on all adverts and editorial typeset by The Local Rock. These may not be reproduced elsewhere without prior written permission from The Local Rock. All rights reserved. No part of this publication may be reproduced without prior permission of The Local Rock

Web: **www.localrock.co.uk**

Email: **info@localrock.co.uk**



## CLEAR EARS

### Mobile Ear Wax Removal

Hinckley / Nuneaton and surrounding area

#### Micro-suction/Irrigation

Irrigation £32 one ear - £47 two

Microsuction £45 one ear - £60 two

Call us to discuss wax removal via micro-suction or water irrigation in the comfort of your own home.



Call or text David **07518 243091**



See my facebook page / webpage at [clearearshinckley](#)

## Maple Garden & Home Services

- Grass Cutting
- Garden Maintenance
- Painting - Interior/Exterior
- Minor Building work
- Bricklaying

Call Blake



**07908 597376** Nuneaton

## Made to measure

Quality Curtains

Pelmets

Swags & Tails

Roman Blinds



### HOME VISITS WITH FABRIC SAMPLES

Full measuring, making and fitting service by Professional Designer

Call in and see us  
or phone

## Stylish Curtains

20a The Green, Attleborough, Lutterworth Road, Nuneaton  
Tel: 024 7635 4863 Mobile: 07971 759102



## Have you suffered as a result of medical negligence or personal injury?

**Making a claim can be complex and stressful so having an experienced team to pursue your claim is essential.**

We can help you to get the compensation and support that you may be entitled to.

- **Call now to book an appointment at our Drop-In Clinics held in our Nuneaton office every third Wednesday of the month from 2:00pm to 4:30pm**

kind, helpful, excellent

Rachael Flanagan, Head of Medical Negligence & PI  
**01926 356030** [medical.negligence@alsterskelley.com](mailto:medical.negligence@alsterskelley.com)

3 Dugdale Street, Nuneaton, Warwickshire CV11 5QJ

**[www.alsterskelley.com](http://www.alsterskelley.com)**





# New Homes for Bulkington

A new development which will create up to 30 new homes in the heart of Bulkington has been given the green light.

The residential scheme on Trent Road will include a mix of one, two, three and four bedroom homes, including 25% affordable housing to meet local needs.

Outline planning has been approved by Nuneaton and Bedworth Borough Council for the development, which is being brought forward by Warwickshire Property & Development Group (WPDG).

WPDG was established by Warwickshire County Council in 2021 to realise the potential of its development sites, commercial buildings and mineral rights.

This includes the delivery of new affordable and market-priced homes across Warwickshire.

The development is being delivered on Council owned land to the west of Arden Forest Infant School and will be accessed from Trent Road.

Homes at the development will be sustainably built, featuring low-carbon technology, ready for solar panel installation, EV charging points, LED street lighting and sustainable materials.

WPDG will now move to appointing a preferred delivery partner for the scheme in early 2025.

This will be the fourth residential development delivered by WPDG in Nuneaton and North



Warwickshire since it formed.

It is delivering more than 1,700 homes across two schemes through joint venture Develop Warwickshire and has partnered with Seddon Housing Partnerships on another 58-home scheme on the site of Manor Park Secondary School in Nuneaton.

Rob Andrews, Head of Development at Warwickshire Property & Development Group, said: *"This development will see us continue to develop communities in Nuneaton, Bedworth and North Warwickshire and deliver housing in line with local needs."*

*"We will now be moving forward with the appointment of a delivery partner to support the delivery of this important residential development in Bulkington."*

*"We look forward to working with our selected delivery partner to bring forward detailed plans for the scheme."*



**AVON ROOFING  
& GUTTERING SPECIALIST**

Proud member of  
**Checkatrade.com**  
Where reputation matters



**GUTTERING REPAIRED,  
CLEANED OR REPLACED**

- Fascia Boards
- Soffits & Cladding
- Guttering
- Dry Verge/ Dry Ridge
- Felt Flat Roofs
- Rubber Roofs
- New Roofs
- Roofing Repairs
- Slates / Tiling
- Moss removal & more

Call for a free quote on:

**Telephone: 07585 913369**

**Hinckley: 01455 819757**

Email: [avonroofing@hotmail.com](mailto:avonroofing@hotmail.com)

**10  
YEAR  
GUARANTEE**

**ALL ASPECTS OF  
ELECTRICAL WORK  
UNDERTAKEN**  
*No job too big or small*



**BD ELECTRICAL**  
DOMESTIC | COMMERCIAL | INDUSTRIAL

For a reliable and friendly service

**Call: 07912 042 749  
0116 225 2033**



# Are you looking to **improve your home?**



**Get your FREE  
quote online**

[www.progresswindows.com](http://www.progresswindows.com)  
[contactus@progresswindows.com](mailto:contactus@progresswindows.com)



- Composite and uPVC Doors
- Casement Windows
- Flush Casement Windows
- Bi-Fold Doors
- Patio Doors

- French Doors
- Stable Doors
- Sliding Sash Windows
- Tilt & Turn Windows
- Conservatories and Orangeries

- Home Conversions
- Porches
- uPVC Gates and Fences
- Soffit and Fascia boards
- Roofline

**Mon-Fri: 8am-5pm Saturday: 8am-2pm** 30 Westfield Road, Hinckley, Leicestershire LE10 0QW

Contact us today for your  
**FREE** no obligation quote

**01455 632731 /  
0800 212584**



CERTASS



TRUSTMARK  
Government Endorsed Quality

[www.progresswindows.com](http://www.progresswindows.com)



# Another Donation from the Heart from League of Friends

One of the things that kept Nuneaton's George Eliot Hospital running smoothly during 2024 was the incredible support it received from the George Eliot League of Friends.

And towards the end of the year they made yet another incredible donation.

The League of Friends are a charity run by a team of volunteers who support the Trust by purchasing new equipment. The charity raises funds by running two tea bars which provide patients, visitors and staff with essential refreshment in the hospital.

Late last year another successful handover of vital equipment for patients of the Cardio Respiratory Unit was generously funded by the League of Friends.

The Cardio Respiratory Unit received eight Ontrak Monitors, ambulatory blood pressure monitors which are used to record a patient's blood pressure over 24 hours. The Cardio Respiratory Unit needed more meet the current demand and helps the unit provide quicker care for their patients.

This support shows once again the League of Friends dedication and commitment towards patient care.

Mike Parsons, Chairman of the League of Friends, said *"As a key part of the Trust we are always looking for ways to improve patient care and supporting innovation."*

*"We are lucky to have such dedicated volunteers in place to run our tea bars which enable us to provide the support we do. Their time and effort make a real difference to the quality of care the staff provide here at the George Eliot."*

George Eliot Hospital's Managing Director Dr Catherine Free said: *"A huge thanks to*



*the League of Friends. Their hard work and generosity is something we value and appreciate at the hospital. They are part of who we are and I look forward to continuing to work with them in aid of our patients and the community."*

## Select Landscapes

Specialists in -

- Slabbing - Paths & Patios -
- Block Paving - Fencing
- Artificial Grass - Decking
- Tree Work
- Jet Washing & Sealing
- All groundworks undertaken - Turfing



**ANY REASONABLE QUOTE BEATEN.**

Please call for a free quote on **07789 667691**

or **01455 241681**







**charnwood**  
tree  
services

# Martin Page

## YOUR LOCAL TREE SURGEON

*Are your trees too tall, blocking light or untidy?*  
*Do your hedges, conifers or shrubs need trimming?*  
*Would you like to remove that stubborn stump?*

*With 30 years of working in your area, I would be pleased to give you free advice and a free quotation*

Call me now on  
**024 7696 0779 or 01455 268496**





*Constantly  
Recommended!*

**I ALSO SELL...**  
high quality  
firewood logs





YOUR LOCAL SERVICE WITH
**24HR CALL OUT**



**10  
YEAR  
GUARANTEE**

**10%  
DISCOUNT  
FOR SENIOR  
CITIZENS**

Quote  
'Local Rock'  
for  
**20%  
DISCOUNT**

WE WILL BEAT ANY LIKE FOR LIKE QUOTE





**GARADOR**

**cardale**  
GARAGE DOORS

**HENDERSON**

- ☒ Fast, efficient service
- ☒ uPVC, GRP and Steel
- ☒ 24 Hour call out
- ☒ Trade and Public
- ☒ Hormann doors remote control
- ☒ uPVC windows
- ☒ FREE Site Surveys
- ☒ Quality products

**KM GARAGE DOORS**  
SUPPLY • FIT • SERVICE • REPAIR

EST.  
**25  
YEARS**

For more information:  
[krishgaragedoors@gmail.com](mailto:krishgaragedoors@gmail.com)  
[www.krishgaragedoors.co.uk](http://www.krishgaragedoors.co.uk)

**INSURANCE APPROVED**

**COUNTRYWIDE COVERAGE 07958 323265 / 0116 271 6633**



75, Boyslade Road, Burbage, LE10 2RF

Tel: 07929 614486 - Email: [shop@hamlettsharvest.co.uk](mailto:shop@hamlettsharvest.co.uk)



# WIN A £100 FOOD HAMPER/ GIFT VOUCHER

THANKS TO HAMLETT'S HARVEST

## HOW TO ENTER

Thanks to our friends at Hamlett's Harvest, simply find the 10 words shown below and mark them on the wordsearch to be in with a chance of winning a food hamper or gift voucher to the value of £100.

**ARTISAN**

**PASTRIES**

**FRUIT**

**VEGETABLES**

**CHUTNEYS**

**PICKLES**

**CAKES**

**BAKERY**

**SEASONAL**

**FRESH**

**\*POSTAL ENTRIES ACCEPTED ONLY\***

Send your entry to:

The Local Rock

Hamlett's Harvest Competition

8 Hawley Road

Hinckley, Leicestershire

LE10 0PR

Name: .....

**Closing date:**

**Monday 17th**

**March 2025**

Address: .....

\*Winners will receive  
confirmation from  
The Local Rock

Contact number: .....

Email: .....



Contact us  
for a Free No  
Obligation  
Quotation

**ECO** Window  
Systems

Manufacturers and  
Installers of



**Liniair**



*"Massive thank you to all the Eco Windows team. So please with the whole house and conservatory. Very professional service, nothing too much trouble and the finish looks amazing" ★★★★★*

**T. 01455 635 230**

**E: [info@ecowindowsystems.co.uk](mailto:info@ecowindowsystems.co.uk) - [www.ecowindowsystems.co.uk](http://www.ecowindowsystems.co.uk)**

**ECO** | Repairs

**FIND US ON**

**We now offer a repair service which includes**

- Glass Unit Replacements
- Window Hinges
- Window Locks
- Window Handles
- Door Adjustments
- Door Locks
- Door Hinges
- Door Handles

**T. 07926  
129 018**





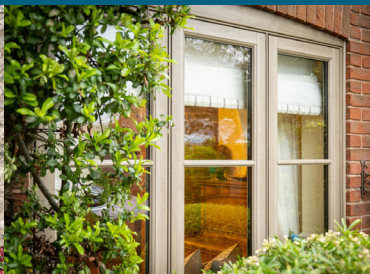
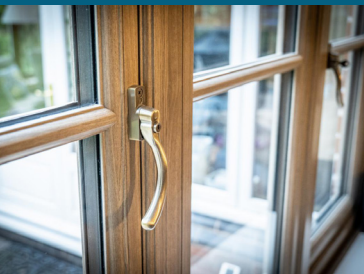
**NEW APPROVED SUPPLIERS  
AND INSTALLERS OF**



**COMING  
SOON**



**RESURGENCE  
TIMBER LOOK  
FLUSH SASH**



**ECO** Window  
Systems



Manufacturers and  
Installers of

**T. 01455 635 230**

**E: [info@ecowindowsystems.co.uk](mailto:info@ecowindowsystems.co.uk)**

**[www.ecowindowsystems.co.uk](http://www.ecowindowsystems.co.uk)**

**FIND US ON**



**LD PLUMBING & HEATING**  
**For ALL of your plumbing needs**  
 Free Estimates AND Low Prices

**24/7 CALL OUT**

**LOCAL PLUMBER**

**All Work Guaranteed**

**No job too small or too big!**  
 For a QUICK, RELIABLE & FRIENDLY SERVICE...

**CALL 07811 423132**  
**OR 01455 717887**

**OAP DISCOUNT**

**safe**  
 632745

**OFTEC**

**Slimming World**  
*feel real good*

**MONDAY**  
 4:00pm, 5:30pm and 7:00pm  
 (7:00pm session is a quieter session)  
 Nuneaton RFC  
 Liberty Way  
 Attleborough Fields Ind Estate  
 Nuneaton  
 Warwickshire  
 CV11 6RR  
**07958 938 367**

**Call Eleanor for more information**  
*real food, real support, real results*

**Slimming WORLD**  
 touching hearts, changing lives

**Spring is on the way...**

**Build your business with The Local Rock and book your adverts now**

**For further details call**  
**01455 698161 - 07977661102**  
**Email info@localrock.co.uk**

**The Local Rock**

**KIRKLAND INTERIORS**  
 A Local Family Run Business

**25 Years Established**

**NEW SHOWROOM COMING SOON**

**KITCHENS**  
**MEDIA WALLS**  
**BEDROOMS**  
**BATHROOMS**

**Free planning and 3D design service**  
**QUALITY LIKE NO OTHER**

**FOR A FREE QUOTATION CONTACT US ON**  
**01455 633483**  
**OR 07903 931124**  
**kirklandinterior@gmail.com**  
**www.kirklandinteriors.co.uk**

# Transforming Nuneaton Enters Second Phase

Visitors to Nuneaton town centre will have noticed that work on the second phase of the Abbey Street project in Nuneaton town centre is well under way.

The second phase is part of the Transforming Nuneaton project, with Nuneaton and Bedworth Borough Council and Warwickshire County Council working together to deliver the transformation of the town centre.

The Transforming Nuneaton project aims to deliver a mixed-use regeneration scheme that will provide Nuneaton with the economic boost it needs and provide new employment opportunities.

Cllr Chris Watkins, Leader of Nuneaton and Bedworth Borough Council said: *"The regeneration of Abbey Street is a fantastic development, not just for Nuneaton but for our entire borough."*

*"The project brings much needed jobs to the borough and will give us a town centre to be proud of."*

Cllr Nicola King, Portfolio Holder for Business and Regeneration, said: *"It really is excellent to see that work is now under way on the second phase."*

*"We were delighted to see the opening of the*



*Hampton by Hilton hotel last year as part of the project and these developments can only enhance our borough and bring more people into the town centre."*



**The Local Rock  
Community Magazines  
Est 14 Years**

**Would you like to  
deliver and be part  
of the community?**

**We are looking for reliable  
delivery staff to deliver The  
Local Rock**

**Delivery People Needed For  
The Wolvey/Hinckley Area**

**Delivery rounds to suit all abilities**

**If you feel you could be part of the Local Rock  
Team please give us a call on 01455 698161  
Email enquiries to: [info@localrock.co.uk](mailto:info@localrock.co.uk)**

## Ellison Brickwork

We offer the complete professional building solutions

- Brickwork
- Driveways
- Foundations
- Garden/Design/Patio
- Extensions

**Free no  
obligations quote**

**32 Years  
Experience**

**Please call Adrian at Ellison Brickwork  
07891 873843**



FULLY FITTED  
FROM  
**£895\***

Checkatrade  
9.8 out of 10

★ Trustpilot  
★★★★★  
3000+ reviews

## Tired of your heavy garage door? Open up to a Garolla.

- ✓ FREE 5-year warranty
- ✓ Manufactured in the UK
- ✓ Fitted by a local Garolla engineer
- ✓ The UK's No.1 recommended

\*Applies to white Transform doors up to 2.25m wide



Ask about our **NEW** Secured By Design accredited TITAN door, giving you peace of mind.

**GAROLLA**  
ELECTRIC GARAGE DOORS

BOOK A **FREE SURVEY** TODAY  
**024 7695 0769**  
**GAROLLA.CO.UK**

# ALL BLINDS 4 U

Quality Blinds - Quality Service

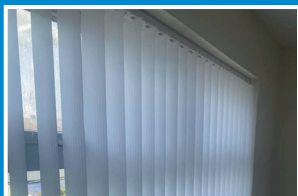
Vertical Blinds • Roller Blinds • Roman Blinds • Wooden and Aluminium Venetian Blinds  
Shutters • Day & Night Blinds • Remote Control Blinds • Perfect Fit Blinds • Quality Fitting



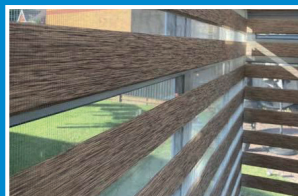
**All Blinds 4 U are based in  
Warwickshire and provide  
quality blinds with professional  
fitting for domestic and  
commercial properties**



**FREE NO OBLIGATION CONSULTATIONS**



Sunday and Monday Closed • Tuesday to Friday  
9.00am - 5.00pm • Saturday 10.00am - 4.00pm  
23 Copsewood Avenue, Nuneaton CV11 4TQ



**Tel: 02477 671 624**

e: [Allblinds4u@outlook.com](mailto:Allblinds4u@outlook.com)  
w: [www.allblinds4u.co.uk/](http://www.allblinds4u.co.uk/)

# Car Parking Fees to Change

The way that people in Nuneaton pay for car parking is set to change, with more flexible ways to pay and reductions in long-stay fees.

Also being introduced is the £1 for the first hour charge which will benefit those who just want to pop into town for a quick errand.

The revised car parking fees will provide flexibility of stay for users and increase the turnover of spaces in the most popular car parks to provide more availability through the day.

Long stay fees will be reduced in leisure centre car parks to enable users to increase their usage at leisure facilities and green spaces.

A discounted fee option in Harefield Road car park will benefit those working in Nuneaton town centre, commuting to work or those who wish to stay in the town centre longer.

The introduction of up-to-date car park payment machines also means contactless payments and Apple Pay will be accepted, ensuring ease of use for customers and providing a significant saving for the Council on the cost of collecting the cash from the machines.

It will also be possible for the Borough Council to view car park use in real time and track trends over a period so that, if necessary, charges can be altered depending on demand - for example reducing long-stay charges on less well used car parks.

Councillor Nicola King, Portfolio holder for Business and Regeneration said: *"This is a really positive move for car parking in the borough. There are many benefits and lots of increased flexibility, giving people options for how they use the car parks.*

*"As well as a reduction in costs for people popping into the town for a quick visit, the revised fees will also benefit commuters working in the town centre and those using the leisure facilities.*

*"I hope residents and visitors can see the advantages and benefit from the ease in which they will be able to use and pay for their parking."*



## We have some great SPECIAL OFFERS to spruce up your home

Get a quote now on a FULL PLASTICS CLEAN fascias/gutters/soffits

### Gutters cleaned from\*:

Terrace House.....**£35**

Semi Detached.....**£50**

Detached.....**£70**

Conservatory cleaned...from **£95**

Car Ports cleaned.....from **£75**

GUTTERING  
AND FASCIAS  
REPLACED OR  
REPAIRED

• Fully insured • OAP Discounts

## Old tired rotten fascia's or leaking gutters

You don't need to replace the whole guttering, we can replace sections...

Old Cast Iron Guttering  
Broken Guttering



## M.D. Fascia and Guttering Services

For a FREE quote call Matt on

**07794 741650**

[www.mdfascia-gutteringservices.co.uk](http://www.mdfascia-gutteringservices.co.uk)

# WE MAKE THE DIFFERENCE

SIMPLY BETTER - WINDOWS, DOORS, CONSERVATORIES, PORCHES AND SUMMERHOUSES

FROM THE COMPANY WHO LOVES YOUR HOME AS MUCH AS YOU DO



- ✓ WINDOWS MANUFACTURED IN OUR OWN LOCAL FACTORY
- ✓ 25 YEAR ASSURED WARRANTY AVAILABLE
- ✓ A+ RATED WINDOWS AS STANDARD
- ✓ UNIQUE DESIGN FEATURES TO IMPROVE PERFORMANCE
- ✓ PAS 24 HARDWARE AS STANDARD
- ✓ MULTIPLE COLOUR AND FINISH OPTIONS
- ✓ WHICH TRUSTED TRADER APPROVED - 4.8 RATING
- ✓ NO HARD SALES JUST KNOWLEDGEABLE ADVICE
- ✓ EXPERT INSTALLERS AND DEDICATED AFTERCARE TEAM
- ✓ VALUE FOR MONEY GUARANTEED

**FINANCE  
PACKAGES  
AVAILABLE**

**BOOK NOW  
AND GET 20% OFF YOUR ORDER\***

\*20% Offer Discount - Cash and Card Payment only.  
\*\*Finance subject to credit checks and approval.

**CALL  
US...**

FOR YOUR **FREE** QUOTE TODAY

**02476 224499**

WWW.WINDOWS-PLUS.CO.UK

**Windows Plus**  
WE MAKE THE DIFFERENCE



WINDOWS | DOORS | CONSERVATORIES | PORCHES | SUMMERHOUSES

## THE LIGHTEST EVER FOLDING POWER WHEELCHAIR

**Premier  
Mobility**

The **QUICKIE Q50R Carbon Wheelchair** is now available from Premier Mobility in Hinckley

- ✓ **TRAVEL LIGHT**  
Weighing only 14.5kg
- ✓ **EFFORTLESS FOLDING**  
A simple clip, fold and push will make folding simple.
- ✓ **PERFECT FOR TRAVEL**  
Lightweight, easy to fold and a great battery range!



**QUICKIE**  
Live without limits.

AVAILABLE IN 5 ACCENT COLOURS



**TRAVEL WITH EASE AND COMFORT WITH THE QUICKIE**  
**PLEASE CONTACT US FOR MORE INFORMATION**

136 Ashby Road  
Hinckley, LE10 1SN



01455 634786



sales@premiermobility.co.uk



# Check Your Smoke Alarm!

People living in Nuneaton and Warwickshire are being urged to make sure they have working smoke alarms fitted in their homes and to test them regularly.

As part of a recent Fire Kills campaign, Warwickshire Fire and Rescue Service (WFRS) is reminding people of the importance of smoke alarms in saving lives in the event of fire.

The majority of homes across the country will have smoke alarms fitted, but not everyone will be aware that the average smoke alarm has a lifespan of just ten years before it needs to be replaced.

With that in mind, WFRS is asking residents to ensure that their smoke alarms are up to date and up to the job.

## *Here are their top safety tips:*

- Make sure there is at least one smoke alarm on every level of the home
- Test smoke alarms at least once a month
- Check that smoke alarms are less than 10 years old
- If you have a smoke detector which runs on a battery that needs replacing, make sure to change it once a year
- Fit smoke alarms in the right place - on landings and hallways and near bedrooms. Consider fitting them in rooms which have electrical appliances – e.g. a heater or charger – or other fire risks



- Check on neighbours or loved ones who may need help to ensure they're fully protected.

Traditional smoke alarms may not be effective for those who are deaf or hearing-impaired.

WFRS encourages deaf or hearing-impaired residents to consider installing sensory smoke alarms. These alarms use bright flashing lights to supplement the sound, providing a clear visual warning in case of fire, they also come with a vibrating unit attachment to raise awareness of the presence of fire.

WFRS offer a free safe and well visit, during the visit they will provide you with fire safety advice, check that your smoke alarms are working and replace/install new ones if needed. Residents with hearing loss who live on their own and who would not be able to hear an alarm sounding without hearing aids can be provided with a free sensory smoke alarm.

Please visit the Warwickshire Fire and Rescue website to book your visit: Safe and Well visit

**Dry Carpet & Fabric Upholstery Cleaning Specialists**  
*Carpets dry and ready to use, Minimal furniture removal.*  
**For a FREE NO obligation survey contact 02476 170 437**



 **Dry Logic**

[www.dry-logic.co.uk](http://www.dry-logic.co.uk)

**Established 2006**

**NEED A PLUMBER?**  
**For all the small jobs the big boys don't want**  
Dripping taps, overflows, toilet not flushing, outside tap, leaking radiator, dishwasher and washing machine installation, new kitchen sink etc.



For a quick, reliable service call Richard at  
**R S PLUMBING SERVICES**  
Tel: **01455 446936** • Mob: **07715 293512**



## DOES YOUR KITCHEN NEED A MAKEOVER?

*Simply change doors, panels, trims, worktops, appliances etc.*

*Less disruption • Honest and practical advice • Local experienced family run business*

*Come and visit us at our **BRAND NEW Showroom** at*

*Gates / Dobbies in Stapleton, located in the food hall near to the tills*

**contact@jaxonrosemakeovers.co.uk • 01455 710388**

**Gates / Dobbies Garden Centre, Woodlands, Ashby Rd, Stapleton, Leicestershire, LE9 8JE**



- Driveways
- Asphalt Driveways
- Block Paving
- Red or Black Tarmacking
- Pattern imprint Concrete
- Resin Driveways
- Landscaping
- Patios
- Paths
- Slabbing
- Building Work & Drainage

Call for a FREE quotation on

**01455 817637**

Email: [enquiries@oakleighdriveways.com](mailto:enquiries@oakleighdriveways.com)

[www.oakleighdriveways.com](http://www.oakleighdriveways.com)

Lychgate Lane, Aston Flamville, Burbage LE10 3AQ





**BURBAGE  
CUSTOM  
WINDOWS**  
Established 1994



**TOP CLASS SERVICE  
FOR OVER 30 YEARS**



## **WINDOWS | DOORS | CONSERVATORIES | ROOFLINE**

Our professional, family-run team are proud to have received thousands of positive reviews from satisfied customers over our 30 years in business. From the first visit through to the build, we aim to deliver exceptional service.

- Visual Design Software To Realise Your Dream New Product
- Friendly, Knowledgeable Staff
- Expert Fabrication and Installation Teams

// If I could give these guys 10 stars I would. The fitters were more than first class, professional, friendly and skilled.

**Nothing not to like about my experience with  
Burbage Custom Windows.**

**Mick Jones**



**Speak to our EXPERT team today**

**01455 631212**

[burbagecustomwindows.co.uk](http://burbagecustomwindows.co.uk)  
[info@burbagecustomwindows.co.uk](mailto:info@burbagecustomwindows.co.uk)

**Or come visit our showroom!**

Unit J, Tungsten Park  
Maple Drive, Hinckley,  
Leicestershire, LE10 3BE

**Monday - Friday**

9am - 5pm

**Saturday**

9am - 12pm



# Midlands Care

## Types of Care:

Residential, Day Care, Respite, Dementia, Physical Disability and Palliative Care

Accredited by  
**INVESTORS  
IN PEOPLE**

Find out more  
on our website:



- An **All-Inclusive Fee**.
- Accept Private And Funded Residents.
- Provide **Free No-Obligation Care Assessment**.
- Can Carry Out The **Assessment Within 24 Hours Of Enquiry**.

## Long Lea

0247 637 0553

## Parkhouse Grange

01455 851 222



113 The Long Shoot,  
Nuneaton, CV11 6JG



47 Park Road, Earl Shilton  
Leicestershire, LE9 7EP

## What Facilities Are In Your Homes?

- Spacious En-Suite Rooms
- Accessible Gardens
- Variety Of Social Spaces
- Nutritious Fresh And Tasty Meals
- Complimentary Wi-Fi
- Disabled Access And Lift Service
- Visitors Parking
- Free Welcome Pack
- Mini Bus Access
- Library Book Delivery
- Laundry And Housekeeping
- Fully Planned Activity Schedule

[www.midlandscare.co.uk](http://www.midlandscare.co.uk)

   @midlandscare



Warwickshire  
County Council



Leicestershire  
County Council



Leicester  
City Council