

Horeston  
Grange

Higham-  
on-the-Hill

Weddington

St Nicolas Park

Hinckley  
Road

Nuneaton

Bulkington

Maple Park

Attleborough

The  
Long  
Shoot

# The Local Rock

*Bringing you the best from the heart of the community for 10 years*

Web: [www.localrock.co.uk](http://www.localrock.co.uk) Email: [info@localrock.co.uk](mailto:info@localrock.co.uk)

**8,500** copies delivered

## Property made simple

Selling and Letting properties across  
**Nuneaton & Villages** for a fair, fixed fee.

Sell from

**£250 OFF**

~~£1,650~~ **£1,400** inc vat

Managed Let from

**£10 PCM OFF**

~~£85~~ **£75** pcm inc vat

024 7771 0790

[www.up-estates.co.uk](http://www.up-estates.co.uk)

 **UP** Estates

This offer applies to properties located in CV10, CV11, CV12, CV13, LE9 and LE10 until  
31st April 2025, to qualify please present this advert upon instruction.

# Are you looking to **improve your home?**



**Get your FREE  
quote online**

[www.progresswindows.com](http://www.progresswindows.com)  
[contactus@progresswindows.com](mailto:contactus@progresswindows.com)



- Composite and uPVC Doors
- Casement Windows
- Flush Casement Windows
- Bi-Fold Doors
- Patio Doors

- French Doors
- Stable Doors
- Sliding Sash Windows
- Tilt & Turn Windows
- Conservatories and Orangeries

- Home Conversions
- Porches
- uPVC Gates and Fences
- Soffit and Fascia boards
- Roofline

**Mon-Fri: 8am-5pm Saturday: 8am-2pm** 30 Westfield Road, Hinckley, Leicestershire LE10 0QW

Contact us today for your  
**FREE** no obligation quote

**01455 632731 /  
0800 212584**



CERTASS



TRUSTMARK  
Government Endorsed Quality

[www.progresswindows.com](http://www.progresswindows.com)



**Find all  
the latest  
editions,  
prices and  
media pack on  
our website**



**www.localrock.co.uk**

**VILLAGES - HINCKLEY CENTRAL  
NUNEATON**

**SOUTH LEICESTER**

**For further details call**

**01455 698 161 - 07977661102**

**Email [info@localrock.co.uk](mailto:info@localrock.co.uk)**

The  
Local  
Rock

The  
Local  
Rock

## CONTENTS:

- 5 Students Secure Special Glasses for Special Players
- 7 Free Health Checks for Veterans
- 11 Help Celebrate 25 Years of Bulkington Community Centre
- 15 Dark Months and Mental Wellbeing
- 17 Improving Links to New Bedworth Physical Activity Hub
- 19 Exceptional Support at Midlands Care Homes
- 21 WIN £100 Hamper/Gift Voucher to Spend at Hamlett's Harvest

**www.localrock.co.uk**

The  
Local  
Rock

*Read Us - Keep Us  
- Recycle Us*



## "They helped us and it has generated so many new clients for us"

The Directors of Life Quality Bathing would like to thank The Local Rock Team and all our new clients.

We have been advertising with them since our launch in September into The Local Rock magazine into Hinckley, Villages and Nuneaton editions.

We would highly recommend The Local Rock magazine team to look after your advertising in the local community, from start to finish they helped us and it has generated so many new clients for us.

The quality of the service, the prices and the quality of the various magazines that go out each week, we couldn't be more happier, we look forward to working with them over the coming months.

**Promote your business regularly with us, call us on 01455 698161**



### Terms and Conditions

Although all effort will be made to meet customers' wishes, the publishers do not accept responsibility for inaccuracies in advertisements or in consequences arising, nor do they guarantee the insertion of any advertisement on a specified section of the magazine. No responsibility is accepted for the loss or damage to copy, or error in the printing. It is the responsibility of customers placing adverts to ensure conformity with the Trade Description Act 1975 Sex Discrimination Act 1975, Business Advertisements Disclosure Order 1977 and the Consumer Credit Act 1974. All artwork used in The Local Rock must not be published or used in any other publications without our permission. All advertisements placed in the Local Rock need to be pre-paid prior to insertion. We reserve the right to amend or omit any advertisement without giving prior notice to the advertiser. All advertisements are accepted in good faith. Placing an order with The Local Rock will signify acceptance of the above conditions. **The Local Rock January 2025**

**DISCLAIMER.** The opinions expressed in this publication are not necessarily those of the editor. The Local Rock retains typographical copyright on all adverts and editorial typeset by The Local Rock. These may not be reproduced elsewhere without prior written permission from The Local Rock. All rights reserved. No part of this publication may be reproduced without prior permission of The Local Rock

Web: **www.localrock.co.uk**

Email: **info@localrock.co.uk**

3



## NEED A PLUMBER?

**For all the small jobs the big boys don't want**

Dripping taps, overflows, toilet not flushing, outside tap, leaking radiator, dishwasher and washing machine installation, new kitchen sink etc.

For a quick, reliable service call Richard at

**R S PLUMBING SERVICES**

Tel: **01455 446936** • Mob: **07715 293512**

## Dry Carpet & Fabric Upholstery Cleaning Specialists

*Carpets dry and ready to use, Minimal furniture removal.*

**For a FREE NO obligation survey contact 02476 170 437**



**Dry Logic**

[www.dry-logic.co.uk](http://www.dry-logic.co.uk)

**Established 2006**



## Made to measure

Quality Curtains

Pelmets

Swags & Tails

Roman Blinds



### HOME VISITS WITH FABRIC SAMPLES

Full measuring, making and fitting service by Professional Designer

Call in and see us  
or phone

**Stylish Curtains**

20a The Green, Attleborough, Lutterworth Road, Nuneaton

Tel: **024 7635 4863** Mobile: **07971 759102**

**No.1 for Kitchen Makeovers**



**JAXON ROSE  
MAKEOVERS**

## DOES YOUR KITCHEN NEED A MAKEOVER?

*Simply change doors, panels, trims, worktops, appliances etc.*

*Less disruption • Honest and practical advice • Local experienced family run business*

*Come and visit us at our **BRAND NEW Showroom** at*

***Gates / Dobbies in Stapleton, located in the food hall near to the tills***

**contact@jaxonrosemakeovers.co.uk • 01455 710388**

**Gates / Dobbies Garden Centre, Woodlands, Ashby Rd, Stapleton, Leicestershire, LE9 8JE**



# Students Secure Special Glasses for Special Players

*Young footballers with visual impairment in Nuneaton can now play the game with special sports glasses – thanks to a group of talented students.*

The Level 5 HND Social and Community Work students from North Warwickshire and South Leicestershire College successfully completed a pioneering project to supply specialist spectacles for young people with vision impairments who play sport.

This innovative initiative, to develop a professional presentation aimed at improving access to football for visually impaired athletes, involved a collaboration with Level 4 Graphic Design students and Weddington Football Club.

The students raised awareness about the difficulties faced by young athletes who cannot wear traditional glasses while playing sport, which often means they miss out on opportunities to showcase their talent to scouts.

With support from Community and Voluntary Action Nuneaton and Bedworth, known as (CAVA), and funding through a Warwickshire County Council grant from Councillor Robert Tromans, the students have been able to provide sports glasses that will allow these young footballers to play without limitations.

Laura Fullylove, a student who worked on the project, said: *“Being part of this project has been an incredible experience. Designing sports goggles for visually impaired young footballers has given me a unique opportunity to apply my skills in a meaningful way.*

*“It’s great to know that our work could help these athletes perform at their best and break barriers on the field. I hope this project inspires*



*others to think creatively about accessibility in sports.”*

Cllr Robert Tromans, Weddington division, said: *“I am so pleased to have been able to support the bid from Weddington Junior Football Club. Promoting physical activity is important and these goggles will help enable local children, who need corrective vision, to enjoy football.”*

Michelle Black, CAVA Funding and Group Development Officer for Nuneaton and Bedworth said: *“We are delighted to have been part of this project. Seeing the students’ passion and commitment to making sport more accessible for all young people was truly inspiring.”*

Susan Adcock, Academic Coordinator, added: *“The collaboration between the Social and Community Work and Graphic Design Higher Education students has been inspiring.”*

Peter Everitt of Weddington Football Club said: *“Our football team has a long-standing commitment to inclusivity, and these glasses are a game-changer for the young athletes who struggle with vision impairments, giving them the confidence to fully engage in the game and demonstrate their talent on the field.”*

# ALL BLINDS 4 U

Quality Blinds - Quality Service

Vertical Blinds • Roller Blinds • Roman Blinds • Wooden and Aluminium Venetian Blinds  
Shutters • Day & Night Blinds • Remote Control Blinds • Perfect Fit Blinds • Quality Fitting



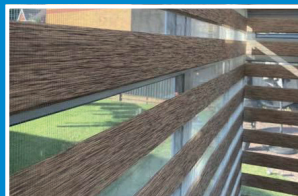
**All Blinds 4 U are based in  
Warwickshire and provide  
quality blinds with professional  
fitting for domestic and  
commercial properties**



**FREE NO OBLIGATION CONSULTATIONS**



Sunday and Monday Closed • Tuesday to Friday  
9.00am - 5.00pm • Saturday 10.00am - 4.00pm  
23 Copsewood Avenue, Nuneaton CV11 4TQ



**Tel: 02477 671 624**

e: [Allblinds4u@outlook.com](mailto:Allblinds4u@outlook.com)  
w: [www.allblinds4u.co.uk/](http://www.allblinds4u.co.uk/)

## WE MAKE THE DIFFERENCE

**SIMPLY BETTER - WINDOWS, DOORS, CONSERVATORIES, PORCHES AND SUMMERHOUSES**

FROM THE COMPANY WHO LOVES YOUR HOME AS MUCH AS YOU DO



- ✓ WINDOWS MANUFACTURED IN OUR OWN LOCAL FACTORY
- ✓ 25 YEAR ASSURED WARRANTY AVAILABLE
- ✓ A+ RATED WINDOWS AS STANDARD
- ✓ UNIQUE DESIGN FEATURES TO IMPROVE PERFORMANCE
- ✓ PAS 24 HARDWARE AS STANDARD
- ✓ MULTIPLE COLOUR AND FINISH OPTIONS
- ✓ WHICH TRUSTED TRADER APPROVED - 4.8 RATING
- ✓ NO HARD SALES JUST KNOWLEDGEABLE ADVICE
- ✓ EXPERT INSTALLERS AND DEDICATED AFTERCARE TEAM
- ✓ VALUE FOR MONEY GUARANTEED

**FINANCE  
PACKAGES  
AVAILABLE\*\***

**BOOK NOW  
AND GET 20% OFF YOUR ORDER\***

\*20% Offer Discount - Cash  
and Card Payment only.  
\*\*Finance subject to credit  
checks and approval.

**CALL  
US...**

FOR YOUR **FREE** QUOTE TODAY  
**02476 224499**  
[WWW.WINDOWS-PLUS.CO.UK](http://WWW.WINDOWS-PLUS.CO.UK)

**Windows Plus**  
WE MAKE THE DIFFERENCE



WINDOWS | DOORS | CONSERVATORIES | PORCHES | SUMMERHOUSES

# Free Health Checks for Veterans

Local veterans are being offered free health checks after health and veteran organisations joined forces to develop a new innovative project in the local community.

This initiative is being offered as a collaboration between George Eliot Hospital NHS Trust, Veterans Contact Point, Warwickshire County Council, North Arden Primary Care Network and Nuneaton and Bedworth Primary Care Network.

The first checks were offered as part of the 'Brew and Banter' events at the Veterans Contact Point Nuneaton Hub which started from Wednesday 22nd of January, with further sessions in different community locations to be released throughout the year.

Free, tailored health checks are being given to catch potential health problems early, allowing veterans to live healthier, more active lives.

*"We are extremely proud to be offering free health checks to our veterans who we have a very close and important relationship with,"* said Dr Catherine Free, Managing Director of George Eliot Hospital NHS Trust. *"This initiative is our way of showing gratitude to those who have served our country."*

*"By providing early detection and prevention in a community setting, we can ensure that veterans have access to the care and support they deserve."*



The program is open to all veterans, regardless of age or the length of time since their service.

Len Hardy BEM, Chief Executive Officer of The Veterans Contact Point and also a veteran himself, commented on his own personal circumstances that following a scheduled blood screening test which indicated problems he was subsequently diagnosed with Leukaemia (AM) and received treatment which is ongoing.

Len reflected: *"This would not have been detected if I had not had the routine blood screening at the George Eliot Hospital and I would encourage all North Warwickshire Veterans to take full advantage of this free health check opportunity."*

Veterans interested in accessing the free health checks can visit [www.geh.nhs.uk/veteranshealth](http://www.geh.nhs.uk/veteranshealth) or call 02476 343 793 for more information.



## Spring is on the way...

**Build your business with The Local  
Rock and book your adverts now**

**For further details call  
01455 698161 - 07977661102  
Email [info@localrock.co.uk](mailto:info@localrock.co.uk)**



## ALL ASPECTS OF ELECTRICAL WORK UNDERTAKEN

*No job too big or small*



**BD ELECTRICAL**

DOMESTIC | COMMERCIAL | INDUSTRIAL

**For a reliable and friendly service**  
**Call: 07912 042 749  
0116 225 2033**







Life Quality Bathing Ltd

Visit us at  
our Award  
Winning  
Showroom

**Your quality of life starts here**

**February  
offer  
now on**

Free Karndean flooring and Como furniture  
throughout February with every full  
bathroom or wetroom installation

Bespoke bathing solutions for those with reduced mobility

 **0800 448 0448**



[www.life-quality.co.uk](http://www.life-quality.co.uk)

The Calf Pen, Rock Farm Offices  
Seckington, Tamworth, B79 0LA



## HATE GYMS? LOVE GYMOPHOBICS!



**SPECIAL OFFER  
£30 OFF!**

OFFER VALID: 28/02/2023  
Tub & Co supply

Focusing on ladies over 40!

Amazing results

Tailored support

Drop a dress size in weeks

Fun & friendly

All sizes & fitness levels

Improve your overall health

Improve strength, mobility  
& flexibility

Eases menopause symptoms

**WALK INS WELCOME!**

Our female-only environment creates a safe haven for women and our highly-trained instructors guide ladies every step of the way. Members receive a personalised programme specifically built around individual needs and regular 1-2-1 reviews keep members on track.

You don't hear clanking weights or whirring treadmills in our centre. Our Instructors are also trained to provide nutritional advice.

**We aren't just a gym, we are a whole lifestyle package revolutionising women's health and fitness.**

**LADIES ONLY - 30 MINUTE WORKOUT**

📞 **01455 697377**

📍 **9a The Borough, Hinckley, LE10 1NL**  
📧 [Hinckleygymphobics.co.uk](mailto:Hinckleygymphobics.co.uk) 📱 [GymphobicsHinckley](https://www.facebook.com/GymphobicsHinckley)

# REGLAZEREPAIR.COM

**Glass Repairs**  
from as little as  
£59 +vat

**Misted windows? Replace the pane keep the frame**

- ✓ Misted Unit Replacements
- ✓ Door Repairs
- ✓ Window Repairs
- ✓ Resealing
- ✓ Locks, Handles & Hinges
- ✓ Single Glaze Glass Repairs
- ✓ Pet Flaps Fitted In Glass or uPVC
- ✓ Leaks, squeaks & draughts stopped



@reglazerepairltd

📍 Throughout the Midlands 🛡️ 10 Year Guarantee 🌱 Energy Efficient Products

Contact us today to arrange your free no obligation quote

📞 **01455 360263**

✉️ **hello@reglazerepair.com**

🌐 **www.ReglazeRepair.com**

Visit Our  
Website  
To Find Out  
More About us



**PRICE PROMISE**

**Your Local Glazing Repair Specialist**

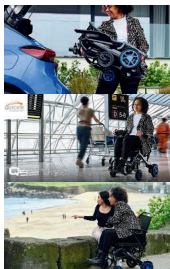


# THE LIGHTEST EVER FOLDING POWER WHEELCHAIR

Premier  
Mobility

The QUICKIE Q50R Carbon Wheelchair is now available from Premier Mobility in Hinckley

- ✓ **TRAVEL LIGHT**  
Weighing only 14.5kg
- ✓ **EFFORTLESS FOLDING**  
A simple clip, fold and push will make folding simple.
- ✓ **PERFECT FOR TRAVEL**  
Lightweight, easy to fold and a great battery range!



QUICKIE  
Live without limits.

AVAILABLE IN 5 ACCENT COLOURS



TRAVEL WITH EASE AND COMFORT WITH THE QUICKIE  
PLEASE CONTACT US FOR MORE INFORMATION

136 Ashby Road  
Hinckley, LE10 1SN

01455 634786

sales@premiermobility.co.uk



**Oakleigh  
Driveways**

- Driveways
- Asphalt Driveways
- Block Paving
- Red or Black Tarmacking
- Pattern imprint Concrete
- Resin Driveways
- Landscaping
- Patios
- Paths
- Slabbing
- Building Work & Drainage

Call for a FREE quotation on

**01455 817637**

Email: enquiries@oakleighdriveways.com

www.oakleighdriveways.com

Lychgate Lane, Aston Flamville, Burbage LE10 3AQ





# Help Celebrate 25 Years of Bulkington Community Centre

*2025 marks the 25th anniversary of Bulkington Community & Conference Centre!*

It all started back in 1996 when, to prevent developers taking the land, some local villagers came together to form a charity taking over the old school and developing it into a multiactivity community centre.

Since May 2000, the centre has gone from strength to strength and is an integral part of the community.

The 25th anniversary takes place in May and there will be various events and activities throughout 2025 to celebrate.

These events will not only be a celebration but also a very necessary way to help raise funds for the centre and planned projects.

A spokesperson said: *"As a charity, we work extremely hard to raise funds, led by a very small team of employees and a number of volunteers without whom we would not be able to offer such an extensive programme of events and activities."*



*"We achieve big things, but we must work extremely hard to maintain a very ageing school building and continue to develop the site and services. We are responsible for all upkeep and running and development costs."*

*"We are dedicated to making a positive*

*impact in the lives of our local community and are often supporting new groups to get up and running."*

One regular event is a Drumming Circle which takes place monthly on a Monday at 5.50pm. Beginners are welcome so take along a drum or a rattle for an uplifting experience.

For more information email [sallybatley202@gmail.com](mailto:sallybatley202@gmail.com).

Or there's the Medicine Circle, a "Whol-istic Women's Wellness Group" which starts on Friday, 14 February from 2pm to 3pm for eight consecutive weeks.

For more information call Sharon at Embrace 07830 000712 or email [embracebysharon@gmail.com](mailto:embracebysharon@gmail.com)

## Ellison Brickwork

We offer the complete professional building solutions

- Brickwork
- Driveways
- Foundations
- Garden/Design/Patio
- Extensions

Free no obligations quote

32 Years Experience

Please call Adrian at Ellison Brickwork  
**07891 873843**

## Select Landscapes

Specialists in -

- Slabbing - Paths & Patios -
- Block Paving - Fencing
- Artificial Grass - Decking
- Tree Work
- Jet Washing & Sealing
- All groundworks undertaken - Turfing



**ANY REASONABLE QUOTE BEATEN.**

Please call for a free quote on **07789 667691**  
or **01455 241681**



Contact us  
for a Free No  
Obligation  
Quotation

# ECO Window Systems

Manufacturers and  
Installers of



**Liniair**



*"Massive thank you to all the Eco Windows team. So please with the whole house and conservatory. Very professional service, nothing too much trouble and the finish looks amazing" ★★★★★*

## T. 01455 635 230

E: [info@ecowindowsystems.co.uk](mailto:info@ecowindowsystems.co.uk) - [www.ecowindowsystems.co.uk](http://www.ecowindowsystems.co.uk)

## ECO | Repairs

FIND US ON 

We now offer a repair service which includes

- Glass Unit Replacements
- Window Hinges
- Window Locks
- Window Handles
- Door Adjustments
- Door Locks
- Door Hinges
- Door Handles

## T. 07926 129 018



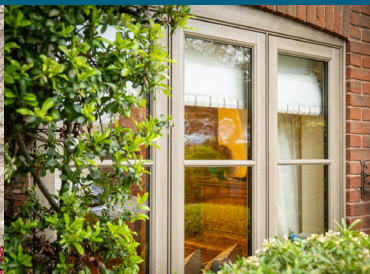
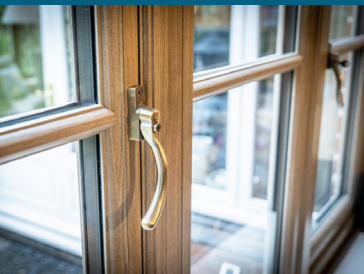
**NEW APPROVED SUPPLIERS  
AND INSTALLERS OF**



**COMING  
SOON**



**RESURGENCE  
TIMBER LOOK  
FLUSH SASH**



**ECO** Window  
Systems



**T. 01455 635 230**

**E: [info@ecowindowssystems.co.uk](mailto:info@ecowindowssystems.co.uk)**

**[www.ecowindowssystems.co.uk](http://www.ecowindowssystems.co.uk)**

**FIND US ON**





**YOUR LOCAL SERVICE WITH 24HR CALL OUT**

**10 YEAR GUARANTEE**

**10% DISCOUNT FOR SENIOR CITIZENS**

Quote 'Local Rock' for **20% DISCOUNT**

**WE WILL BEAT ANY LIKE FOR LIKE QUOTE**

**KM GARAGE DOORS**  
SUPPLY • FIT • SERVICE • REPAIR

**HORMANN**  
GARAGE DOORS

**GARADOR**

**cardale**  
GARAGE DOORS

**HENDERSON**

- ✓ Fast, efficient service
- ✓ uPVC, GRP and Steel
- ✓ 24 Hour call out
- ✓ Trade and Public
- ✓ Hormann doors remote control
- ✓ uPVC windows
- ✓ FREE Site Surveys
- ✓ Quality products

**EST. 25 YEARS**

For more information:  
[krishgaragedoors@gmail.com](mailto:krishgaragedoors@gmail.com)  
[www.krishgaragedoors.co.uk](http://www.krishgaragedoors.co.uk)

**INSURANCE APPROVED**

**COUNTRYWIDE COVERAGE 07958 323265 / 0116 271 6633**

**charnwood**  
tree services

**Martin Page**  
YOUR **LOCAL** TREE SURGEON

- ✿ Are your trees too tall, blocking light or untidy?
- ✿ Do your hedges, conifers or shrubs need trimming?
- ✿ Would you like to remove that stubborn stump?

*With 30 years of working in your area, I would be pleased to give you free advice and a free quotation*

Call me now on  
**024 7696 0779 or 01455 268496**

*Constantly Recommended!*

**I ALSO SELL...**  
 high quality  
 firewood logs

**Fully Insured**

# Dark Months and Mental Wellbeing

As winter continues, the colder, darker months can have a negative effect on a person's mood, so this is an important time of year for everyone, especially children and young people, to look after their mental health.

That's why we're sharing advice and guidance on how young people, supported by parents, carers and schools, can look after their mental health and wellbeing throughout the winter.

## Support for children and young people

Children and young people experience emotional challenges from time to time and it's important that they know they don't have to go through it alone—help is always available through a range of support services.

It may not be easy for young people to recognise when they're struggling. Some signs to look out for include losing interest in activities, having ongoing trouble sleeping, wanting to spend more time alone, feeling upset or angry more than usual, or self-neglect. If these signs seem familiar, it's important to let someone know and reach out for support.

The Warwickshire Rise Service offers comprehensive support for all children and young people, which includes:

**Direct Support:** A combination of group sessions for young people and their parents or carers, along with individual therapeutic interventions.

## School-Based Resilience Programmes:

Initiatives like Boomerang, Big Umbrella, and Mental Health in School Teams.

**Support for Caregivers:** Collaborating with social care, schools, and other professionals.

**Community-Based Support:** Resources for parents and carers through Rise Community Partnerships.

**24-Hour Support:** Access to crisis care and a 24/7 helpline.

Additionally, Kooth is a countywide digital platform for young people aged 11-25 in



Warwickshire, providing a safe and confidential way to access emotional wellbeing and early intervention mental health support.

For more information on the services and resources available to help support children and young people's mental health, visit the Warwickshire County Council website at: Mental health services for young people – Warwickshire County Council

For wider information on the mental health and wellbeing services available to all residents, visit [www.warwickshire.gov.uk/mentalhealth](http://www.warwickshire.gov.uk/mentalhealth).



Cut me out to keep



**The Local Rock**  
**Community Magazines**  
**Est 14 Years**

**Would you like to  
deliver and be part  
of the community?**

**We are looking for reliable delivery  
staff to deliver The Local Rock**

**Delivery People Needed  
For The Bulkington Area**

**Delivery rounds to suit all abilities**

**If you feel you could be part of the Local Rock  
Team please give us a call on 01455 698161  
Email enquiries to: [info@localrock.co.uk](mailto:info@localrock.co.uk)**

Open for all year groups



# Hollycroft Primary School

**Current admissions are for Reception, Year 1 and Year 2\***

**September 2025 admissions to include pupils for Key stage 2\***

*\*subject to numbers for the academic year classes will be made available.*

30 pupils for each year group.

**All admission applications should be made through the Local Authority.**

(Parents are encouraged to apply online whether in or out of the catchment area).

[www.leicestershire.gov.uk/education-and-children/schools-colleges-and-academies/school-admissions](http://www.leicestershire.gov.uk/education-and-children/schools-colleges-and-academies/school-admissions)

[www.warwickshire.gov.uk/admissions](http://www.warwickshire.gov.uk/admissions)

## Applications now open for September 2025

[www.hollycroftschoool.co.uk](http://www.hollycroftschoool.co.uk)

Greenfinch Road, Hinckley, Leicestershire LE10 3GL

Email: [office@hollycroft.leics.sch.uk](mailto:office@hollycroft.leics.sch.uk)

Phone: 01455 241171





# Improving Links to New Bedworth Physical Activity Hub

A big step forward in improving links to and from Bedworth town centre and the new Bedworth Physical Activity Hub will start being put in place this month.

Warwickshire County Council Highways Directorate will install a new crossing point on Sergeant Simon Valentine Way and a cycle path leading into Miners' Welfare Park.

The works are financed using Levelling Up funds secured by Nuneaton and Bedworth Council and provided by the Ministry of Housing, Communities and Local Government Pathfinder Programme, along with funding from Sport England and the Council itself.

The crossing works are planned to start the week commencing Monday 24 February and will last for approximately six weeks.

Some traffic management controls will need to be in place at times during the work and both Councils are asking for the public's tolerance and understanding of any inconvenience that results during the project.

Additional path works will also separately be being undertaken by NBBC's Activity Hub construction contractors BAM near the mountain bike trail skills area to start to create some of the new and wider permanent tarmac paths leading to the hub.

This work will involve a very short path diversion being put in place during two working weeks, but Parkrun routing at the weekend will be unaffected.

That Activity Hub path work is scheduled to start on Monday 10 February.

Cllr Jan Matecki, Warwickshire County Council Portfolio Holder for Transport and Planning, said:

*"This new crossing and cycle path represent a significant step forward in connecting*



*Bedworth town centre with the exciting new Physical Activity Hub.*

*"These improvements will not only promote active travel and healthier lifestyles, but also future-proof further planned active travel connections and play a vital role in the wider regeneration of Bedworth, supporting economic growth and enhancing connectivity for residents."*

Cllr Tim Jenkins, Portfolio Holder for Leisure, Communities and Health at Nuneaton and Bedworth Borough Council, said:

*"We apologise for any inconvenience that the additional path works near the Physical Activity Hub cause but have worked closely with BAM as our Activity Hub construction contractor to absolutely minimise any impacts on park users."*

*"Can we please ask people visiting the park during that time to follow any signage and any directions given by construction site staff."*

*"We have tried to keep a path circuit open and available at all times around the park for residents during the construction period and doing that necessitates occasional minor adjustments to the route that the temporary path circuit takes."*

*"The alternative would have been to close off the circuit around the park fully for much longer periods, so we ask for your understanding while we work towards a new Physical Activity Hub for Bedworth fully fit for the 21st century and towards the enhanced park facilities."*



ROOFRITE<sup>ltd</sup>

Company Number 11814859

- ✓ **No Deposit Required**
- ✓ **No Call Out Fees**
- ✓ **All Rubbish Removed**
- ✓ **Fully Insured**

**FREE SCAFFOLDING**  
WITH ALL NEW ROOFS



# ROOFING SERVICES EXPERTS

ALL ASPECTS OF ROOFING WORK  
UNDERTAKEN  
FLAT ROOFING  
PITCH ROOFING  
RE-POINTING  
RE-BEDDING  
CHIMNEY RE-BUILD  
DRY VERGE  
DRY RIDGE  
UPVC FASCIAS, SOFFITS & GUTTERING  
ROOFLINE  
MOSS REMOVAL

**25 YEAR GUARANTEE**



**CALL TODAY FOR A FREE QUOTATION & ADVICE**

**LEICESTER**

**0116 442 0189**

**HINCKLEY**

**01455 372033**

**INFO@ROOFRITEUK.COM • WWW.ROOFRITEUK.COM**

# Exceptional Support at Midlands Care Homes



Long Lea Residential Home



Parkhouse Grange Residential Home

Long Lea and Parkhouse Grange are two distinguished residential care homes in the local area, offering exceptional support tailored to meet diverse needs. As part of Midlands Care - an established group dedicated to providing round-the-clock, outstanding care—both homes stand as pillars of compassionate and personalised support.

Our care homes cater to a wide range of needs, including residential care, dementia care, mental health support, physical disabilities, palliative care, and sensory impairments. We also offer short-term respite care, providing families with the flexibility they need. Whether privately funded or supported by local authorities, every resident receives the same high standard of care, rooted in dignity, respect, and compassion.



Life at Long Lea and Parkhouse Grange is vibrant and engaging. We believe that staying active is key to overall well-being, which is why we offer a variety of activities designed

to entertain, inspire, and invigorate. From coffee mornings and gardening clubs to arts and crafts sessions, cocktail-making classes, and movie nights, there is always something exciting happening. Residents also enjoy outings facilitated by our dedicated minibus service, allowing them to explore the local community and beyond.



Meal times are a highlight at both homes. Our talented chefs prepare fresh, home-cooked meals daily, focusing on nutrition, flavour, and variety. We create well-balanced meal plans tailored to individual dietary needs, ensuring that dining is not just nourishing but also an enjoyable social experience.

Our philosophy is simple yet profound: *“If it doesn’t meet the standards I’d want for my mother, it doesn’t meet our standards for anyone.”* This guiding principle shapes every aspect of care we provide, ensuring that each resident feels valued, safe, and truly at home.

Discover the warmth, care, and community spirit at Long Lea and Parkhouse Grange - where exceptional care is our everyday commitment.



## We have some great SPECIAL OFFERS to spruce up your home

Get a quote now on a **FULL PLASTICS  
CLEAN fascias/gutters/soffits**

### Gutters cleaned from\*:

Terrace House.....£35

Semi Detached.....£50

Detached.....£70

Conservatory cleaned...from £95

Car Ports cleaned.....from £75

GUTTERING  
AND FASCIAS  
REPLACED OR  
REPAIRED

• Fully insured • OAP Discounts

## Old tired rotten fascia's or leaking gutters

You don't need to  
replace the whole  
guttering, we can  
replace sections...

Old Cast Iron Guttering  
Broken Guttering

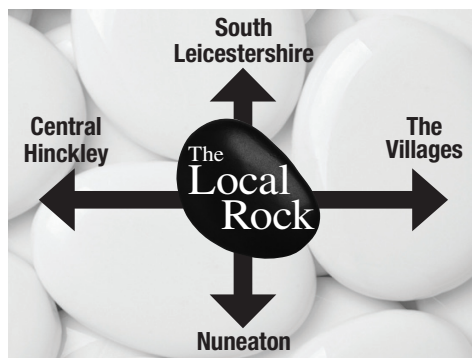


## M.D. Fascia and Guttering Services

For a **FREE** quote call Matt on

**07794 741650**

[www.mdfascia-gutteringservices.co.uk](http://www.mdfascia-gutteringservices.co.uk)



**78,000 magazines reaching  
far and wide per month**

## KIRKLAND INTERIORS

A Local Family Run Business

25 Years Established



**KITCHENS  
MEDIA WALLS  
BEDROOMS  
BATHROOMS**



Free planning and 3D design service  
**QUALITY LIKE NO OTHER**



FOR A FREE QUOTATION CONTACT US ON

**01455 633483**

**OR 07903 931124**

[kirklandinterior@gmail.com](mailto:kirklandinterior@gmail.com)

[www.kirklandinteriors.co.uk](http://www.kirklandinteriors.co.uk)



75, Boyslade Road, Burbage, LE10 2RF

Tel: 07929 614486 - Email: [shop@hamlettsharvest.co.uk](mailto:shop@hamlettsharvest.co.uk)



## WIN A £100 FOOD HAMPER/ GIFT VOUCHER

THANKS TO HAMLETT'S HARVEST

### HOW TO ENTER

Thanks to our friends at Hamlett's Harvest, simply find the 10 words shown below and mark them on the wordsearch to be in with a chance of winning a food hamper or gift voucher to the value of £100.

**ARTISAN**

**PASTRIES**

**FRUIT**

**VEGETABLES**

**CHUTNEYS**

**PICKLES**

**CAKES**

**BAKERY**

**SEASONAL**

**FRESH**

**\*POSTAL ENTRIES ACCEPTED ONLY\***

Send your entry to:

The Local Rock

Hamlett's Harvest Competition

8 Hawley Road

Hinckley, Leicestershire

LE10 0PR

Name: .....

**Closing date:**

**Monday 17th**

**March 2025**

Address: .....

\*Winners will receive  
confirmation from  
The Local Rock

Contact number: .....

Email: .....



## Have you suffered as a result of medical negligence or personal injury?

**Making a claim can be complex and stressful so having an experienced team to pursue your claim is essential.**

We can help you to get the compensation and support that you may be entitled to.

- **Call now to book an appointment at our Drop-In Clinics held in our Nuneaton office every third Wednesday of the month from 2:00pm to 4:30pm**

kind, helpful, excellent

Rachael Flanagan, Head of Medical Negligence & PI  
**01926 356030** [medical.negligence@alsterskelley.com](mailto:medical.negligence@alsterskelley.com)

3 Dugdale Street, Nuneaton, Warwickshire CV11 5QJ  
**[www.alsterskelley.com](http://www.alsterskelley.com)**



**FULLY FITTED  
FROM  
£895\***



**Checkatrade**  
9.8 out of 10

**Trustpilot**  
★★★★★  
9000+ reviews

## Tired of your heavy garage door? Open up to a Garolla.

- ✓ **FREE 5-year warranty**
- ✓ **Manufactured in the UK**
- ✓ **Fitted by a local Garolla engineer**
- ✓ **The UK's No.1 recommended**

\*Applies to white Transform doors up to 2.25m wide



Ask about our **NEW** Secured By Design accredited TITAN door, giving you peace of mind.

**GAROLLA**  
ELECTRIC GARAGE DOORS

**BOOK A FREE SURVEY TODAY**  
**024 7695 0769**  
**[GAROLLA.CO.UK](http://GAROLLA.CO.UK)**





**BURBAGE  
CUSTOM  
WINDOWS**  
Established 1994



**TOP CLASS SERVICE  
FOR OVER 30 YEARS**



## **WINDOWS | DOORS | CONSERVATORIES | ROOFLINE**

Our professional, family-run team are proud to have received thousands of positive reviews from satisfied customers over our 30 years in business. From the first visit through to the build, we aim to deliver exceptional service.

- Visual Design Software To Realise Your Dream New Product
- Friendly, Knowledgeable Staff
- Expert Fabrication and Installation Teams

// If I could give these guys 10 stars I would. The fitters were more than first class, professional, friendly and skilled.

**Nothing not to like about my experience with  
Burbage Custom Windows.**

**Mick Jones**



**Speak to our EXPERT team today**

**01455 631212**

[burbagecustomwindows.co.uk](http://burbagecustomwindows.co.uk)  
[info@burbagecustomwindows.co.uk](mailto:info@burbagecustomwindows.co.uk)

**Or come visit our showroom!**

Unit J, Tungsten Park  
Maple Drive, Hinckley,  
Leicestershire, LE10 3BE

**Monday - Friday**

9am - 5pm

**Saturday**

9am - 12pm

# Midlands Care

## Types of Care:

Residential, Day Care, Respite, Dementia, Physical Disability and Palliative Care

Accredited by  
**INVESTORS  
IN PEOPLE®**

Find out more  
on our website:



- An **All-Inclusive Fee**.
- Accept Private And Funded Residents.
- Provide **Free No-Obligation Care Assessment**.
- Can Carry Out The **Assessment Within 24 Hours Of Enquiry**.

## Long Lea

0247 637 0553

## Parkhouse Grange

01455 851 222



113 The Long Shoot,  
Nuneaton, CV11 6JG



47 Park Road, Earl Shilton  
Leicestershire, LE9 7EP

## What Facilities Are In Your Homes?

- |                                    |                                    |                                   |
|------------------------------------|------------------------------------|-----------------------------------|
| • Spacious En-Suite Rooms          | • Complimentary Wi-Fi              | • Mini Bus Access                 |
| • Accessible Gardens               | • Disabled Access And Lift Service | • Library Book Delivery           |
| • Variety Of Social Spaces         | • Visitors Parking                 | • Laundry And Housekeeping        |
| • Nutritious Fresh And Tasty Meals | • Free Welcome Pack                | • Fully Planned Activity Schedule |

[www.midlandscare.co.uk](http://www.midlandscare.co.uk)

   @midlandscare



Warwickshire  
County Council



Leicestershire  
County Council



Leicester  
City Council